

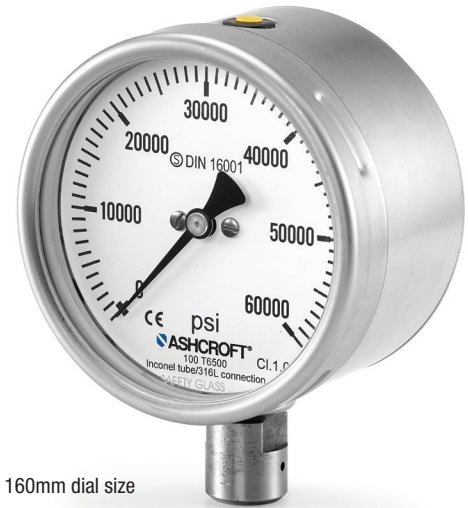
T6500 High Pressure Gauge

FEATURES

- High pressure up to 60,000 psi (4000 bar)
- Solid front all welded stainless steel case
- 100mm and 160mm case size
- Weatherproof protection IP66
- ATEX approval CE Ex II 2 GD c
- Dry, liquid filled or **PLUS!**™ Performance option

TYPICAL USES

- Water jet applications
- Water blaster applications



T6500
100mm & 160mm dial size



SPECIFICATIONS

Accuracy:	1% of span (measured range)
Size:	100mm, 160mm
Range:	0 to 60,000 psi (0 to 4000 bar) MPa, Kg/cm and others
Process Conn. Location:	Lower
Process Conn. Size:	1/16-18UNF-2B right or left handed thread M16 x 1.5 Female
Case Style:	Stainless steel solid front with full rear blowout back
Movement:	Adjustable
Window Material:	Safety glass (STD.), polycarbonate (OPT.)
Dial:	Aluminum, white background, black figures and intervals
Pointer:	Aluminum
Weather Protection:	Dry: IP66/67 and NEMA 4X Liquid filled: IP66/67 and NEMA 4X
Dampening Options:	PLUS! ™ Performance, glycerin, silicone or halocarbon® filled case
Mounting:	Stem and surface
Approvals:	Optional ATEX II 2 GD c IIC Tx for hazardous areas (File No. 35134582 at notified body 0044, TÜV NORD CERT) CE

WETTED COMPONENTS

Bourdon Tube	Process Connection	Joints
Inconel 718	316 SS	Welded

KEY BENEFITS

- Compact 100mm, stainless steel case retrofits competitive gauges
- Ranges to 60,000 psi to meet industry requirements
- All welded stainless steel case to meet demanding applications

NON-WETTED COMPONENTS

Case	Ring	Back Cover
304 SS (STD.)	304 SS	304 SS
316 SS (OPT.)	316 SS	316 SS

MIN/MAX TEMPERATURE LIMITS

Version	Ambient	Process	Storage
Dry	-40°F to 158°F (-40°C to 70°C)	-40°F to 392°F (-40°C to 200°C)	-40°F to 158°F (-40°C to 70°C)
PLUS! ™	-40°F to 158°F (-7°C to 70°C)	-40°F to 200°F (-40°C to 93°C)	-40°F to 158°F (-40°C to 70°C)
Glycerin fill	19°F to 158°F (-7°C to 70°C)	19°F to 200°F (-7°C to 93°C)	-40°F to 158°F (-40°C to 70°C)
Silicone fill	-40°F to 158°F (-7°C to 70°C)	-40°F to 200°F (-40°C to 93°C)	-40°F to 158°F (-40°C to 70°C)
Halocarbon® fill	-40°F to 158°F (-40°C to 70°C)	-40°F to 200°F (-40°C to 93°C)	-40°F to 158°F (-40°C to 70°C)
ATEX	-40°F to 140°F (-40°C to 60°C)	Per ATEX & liquid fill limit	-40°F to 140°F (-40°C to 60°C)

T6500 High Pressure Gauge

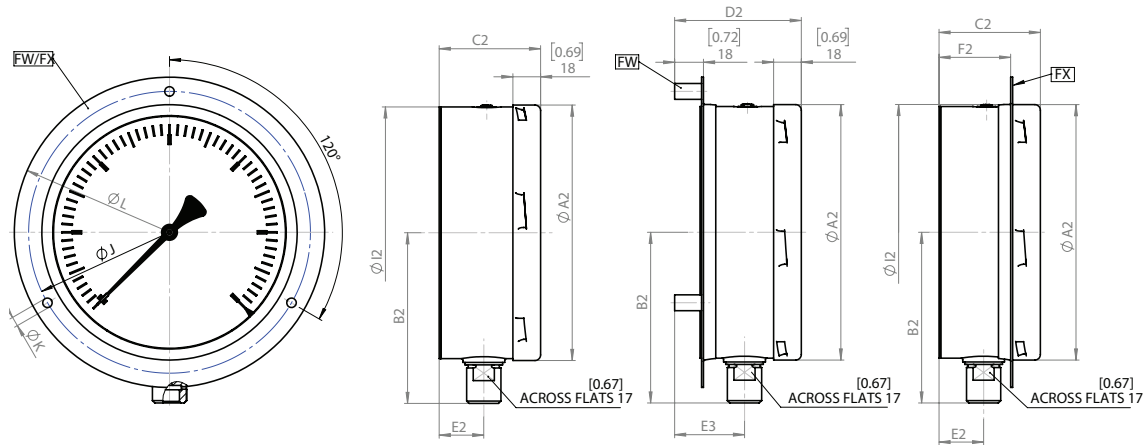
ORDERING CODE	Example:	10T6500	W	D	09	L	6000#	XGV
Dial Size/Model Code								
10T6500 -100mm - 304 stainless steel case, solid front		10T6500						
16T6500 -160mm - 304 stainless steel case, solid front								
System (tube and process connection)								
W - Inconel 718/316L stainless steel			W					
Case Design								
D - Dry				D				
L - Liquid fill (glycerine standard, throttle rod standard with liquid filled case)								
Process Connection Sizes								
09 - 1/16-18 UNF-2B high pressure fitting right handed					09			
29 - 1/16-18 UNF-2B high pressure fitting left handed								
54 - M16 x 1.5 Female								
Process Connection Location								
L - Lower						L		
Range								
Single Scales								
25000# - 25,000 psi								
30000# - 30,000 psi								
60000# - 60,000 psi							60000#	
Options (If choosing an option(s) must include an "X")								
								X__
Dampening								
GV - Silicone fill								GV
GX - Halocarbon® case fill								
LL - PLUS! ™ Performance								
NZ - PLUS! ™ Performance, silicone free								
TS - Throttle rod (standard with liquid filled gauge)								
Case								
FW - Wall mounting flange								
FX - Front flange tack welded to case								
YW - 316L stainless steel case								
Windows/Pointers/Dial								
PD - Polycarbonate window								
EP - Maximum pointer and polycarbonate window								
EQ - Minimum pointer and polycarbonate window								
SH - Red set hand, stationary (dry case only)								
D3 - DuraVis™ Retroreflective Dial (100mm only, dry case only)								
Other								
NH - Stainless steel tag wired to case								
AT - ATEX								
C4 - Individual calibration chart								
HY - Hydrostatic pressure test								
ML - Mass spectrometer leak test								

T6500 High Pressure Gauge

DIMENSIONS in [] are millimeters

For reference only, consult Ashcroft for specific dimensional drawings.

T6500 - Case Option FW, FX



T6500											
Dial Size	A2	B2	C2	D2	E2	E3	F2	J	K	L	Weight
100 mm	3.97 [101]	3.36 [85]	2.38 [61]	2.91 [74]	1.02 [26]	1.55 [39]	1.63 [42]	4.65 [118]	0.24 [6]	5.20 [132]	Dry 0.9 lbs LF 2.7 lbs
160 mm	6.35 [161]	4.54 [115]	2.52 [64]	3.15 [80]	1.11 [28]	1.74 [44]	1.78 [45]	7.01 [178]	0.24 [6]	7.72 [196]	Dry 2.7 lbs LF 4.4 lbs